



Savings for Commercial New Construction Projects

Newly constructed buildings are often expected to be energy efficient, however, that's not always the case. The early stages of the building's design are the most crucial for incorporating energy-efficient measures. NIPSCO's New Construction Program can help. Program participation requires project preapproval before any energy efficiency equipment is purchased or installed. Submit your application early to ensure your design includes the maximum efficiency incentives. Only active NIPSCO customers are eligible. This is your chance to reduce carbon emissions, save money, and reduce energy use for years to come.

NIPSCO's New Construction Program also includes additions or expansions of an existing building, or a gut rehab for a change of purpose requiring replacement of electrical systems/equipment.

Incentive Rates

Incentives are calculated based on the estimated reduction in kilowatt hours (kWh) and/or therms from implementation of the energy efficiency project.

\$0.10/kWh below the baseline for lighting measures

\$0.12/kWh below the baseline for non-lighting measures

\$1.00/therm below the gas baseline

Let Us Handle the Heavy Lifting — We Can Assist with an Energy Saving Analysis

When launching a new construction project, it is important to identify energy efficient solutions during the initial design phase. NIPSCO offers incentives relative to your project's annual calculated energy savings compared to the code-required baseline equipment. However, conducting an Energy Saving Analysis often requires time and money—two factors that often prevent architecture and engineering firms from completing this task.

This is where NIPSCO's program implementer, TRC, comes in! To eliminate extra work for your team, TRC Field Engineers can assist your team during the project's initial design phase to recognize opportunities for energy and cost savings. Depending on the project, TRC offers customers technical calculations or building energy modeling options.

Contact us

Contact a TRC Field Engineer today to learn more: trcsavesenergy.com/Home/ContactUs

Energy Efficiency Opportunities for New Construction

Note: Often Overlooked Upgrades in Bold

- Building Envelope
 - Insulation / Roof / Windows
- Energy Management Systems
- Interior Lighting Design, Fixtures and Lighting Controls
- Exterior Lighting Design and Fixtures
- **Daylight Harvesting**
- **HVAC - Energy Recovery**
- HVAC
 - Heating & Cooling / Ventilation Reduction / DCV / De-stratification Equipment / Controls
- Water Heating (Gas-Fired/Heat Pump)
- Motor Upgrades (Fans/Pumps)
- Compressed Air Systems
- Refrigeration
- Grocery Equipment
- **Data Processing Cooling Equipment**
- Process Equipment
- Office Equipment
- **Kitchen Equipment**
- Agricultural Equipment
- Other Energy Efficient Equipment

Vestil Manufacturing Saves Big with New Construction

Angola, Indiana

Project 1:

Incentives Earned: **\$54,159**

Total Therms Saved: **67,699 Therms**

Project Cost*: **\$78,901**

1st Year ROI*: **65%**

Payback*: **1.54 Years**

Upgrades included: Heating Equipment

Project 2:

Incentives Earned: **\$4,513**

Total kWh Saved: **64,468 kWh**

Project Cost*: **\$5,422.02**

1st Year ROI*: **178%**

Payback*: **0.56 Years**

Upgrades included: Lighting

Project 3:

Incentives Earned: **\$2,300**

Total Therms Saved: **2,300 Therms**

Project Cost*: **\$8,115**

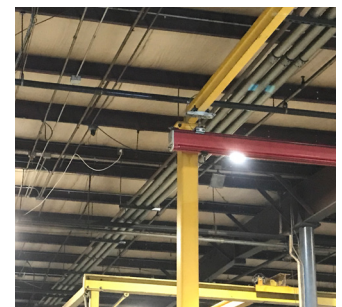
1st Year ROI*: **7%**

Payback*: **14.7 Years**

Upgrades included: Heating Equipment

*With incentive

If the customer participates in the Midstream Channel by purchasing qualifying equipment from a participating distributor, they are not eligible to participate in the Custom, Prescriptive, SBDI, New Construction or any other NIPSCO programs for an incentive on the same piece of equipment.



Together, these projects saved 64,468 kWh and 69,999 Therms, which is equal to:

 **110.7 vehicles** removed from the road

 **929.6 homes** powered for one month

 **180 tons** of landfill CO₂ emissions eliminated

Get Started Saving!

Now that you know more about what to upgrade, visit trcsavesenergy.com/TradeAlly/TradeAllySearch to find an experienced contractor or contact a TRC Field Engineer in your area by visiting trcsavesenergy.com/Home/ContactUs or calling TRC at **1-800-299-2501**.



SCAN TO LEARN MORE